



Therapeutic opportunities for pancreatic β -cell ER stress in diabetes mellitus

Jing Yong¹, James D. Johnson², Peter Arvan³, Jaeseok Han⁴✉ and Randal J. Kaufman¹✉

Abstract | Diabetes mellitus is characterized by the failure of insulin-secreting pancreatic β -cells (or β -cell death) due to either autoimmunity (type 1 diabetes mellitus) or failure to compensate for insulin resistance (type 2 diabetes mellitus; T2DM). In addition, mutations of critical genes cause monogenic diabetes. The endoplasmic reticulum (ER) is the primary site for proinsulin folding; therefore, ER proteostasis is crucial for both β -cell function and survival under physiological and pathophysiological challenges. Importantly, the ER is also the major intracellular Ca^{2+} storage organelle, generating Ca^{2+} signals that contribute to insulin secretion. ER stress is associated with the pathogenesis of diabetes mellitus. In this Review, we summarize the mutations in monogenic diabetes that play causal roles in promoting ER stress in β -cells. Furthermore, we discuss the possible mechanisms responsible for ER proteostasis imbalance with a focus on T2DM, in which both genetics and environment are considered important in promoting ER stress in β -cells. We also suggest that controlled insulin secretion from β -cells might reduce the progression of a key aspect of the metabolic syndrome, namely nonalcoholic fatty liver disease. Finally, we evaluate potential therapeutic approaches to treat T2DM, including the optimization and protection of functional β -cell mass in individuals with T2DM.

In 2019, diabetes mellitus affected approximately 463 million people of all ages worldwide¹ and it is currently the leading cause of macrovascular and microvascular disease, including kidney failure, blindness and heart disease, as well as of lower-limb amputations². Characterized by elevated blood levels of glucose, diabetes mellitus is divided into multiple categories based on pathogenesis, including type 1 diabetes mellitus (T1DM), type 2 diabetes mellitus (T2DM) and monogenic diabetes. T1DM is caused by the autoimmune destruction of pancreatic β -cells. By contrast, T2DM is characterized by insulin resistance and hyperinsulinaemia leading to hyperglycaemia³ and this process is accompanied by progressively deficient glucose-stimulated insulin secretion from β -cells, which starts from an early stage of T2DM⁴. Monogenic diabetes results from single-gene mutations that affect β -cell development, function and/or survival^{5,6}. As all types of diabetes mellitus eventually lead to the loss of functional β -cell mass⁷, an improved understanding of the mechanisms of β -cell failure is essential. It is also critical to know how surviving β -cells compensate for insulin resistance and loss of β -cell mass when they are forced to increase insulin production beyond their capacity.

The endoplasmic reticulum (ER) is a key intracellular organelle, where proteins enter the secretory pathway and fold into native 3D structures that are required for insertion into the endomembrane system or for release into the extracellular space. Several main functions of the ER include protein folding and processing, intracellular Ca^{2+} storage and regulation, and lipid biosynthesis. The cellular maintenance of ER homeostasis is therefore essential for proper protein folding, assembly and secretion as well as for cell survival⁸. Notably, a balanced ER environment is important for professional secretory cells such as hepatocytes, B lymphocytes and pancreatic β -cells, which are more susceptible to ER stress than other cells owing to the large amounts of protein entering the secretory pathway^{9–11}. In addition, ER stress^{12,13} due to the perturbation of ER homeostasis, such as a sudden increase in proinsulin synthesis and/or disruption of Ca^{2+} homeostasis in the ER, leads to an accumulation of unfolded and/or misfolded proteins in the ER lumen, which activates the intracellular signalling pathways collectively known as the unfolded protein response (UPR)^{9,14}. Indeed, accumulating evidence suggests that ER stress might play a role in the initiation and progression of T1DM^{15,16} in addition to the more

¹Degenerative Diseases Program, Sanford-Burnham-Prebys Medical Discovery Institute, La Jolla, CA, USA.

²Department of Cellular and Physiological Sciences & Life Sciences Institute, University of British Columbia, Vancouver, British Columbia, Canada.

³Division of Metabolism Endocrinology & Diabetes, University of Michigan Medical Center, Ann Arbor, MI, USA.

⁴Soonchunhyang Institute of Medi-bio Science (SIMS), Soonchunhyang University, Cheonan-si, Choongchungnam-do, Republic of Korea.

✉e-mail: hanjs015@sch.ac.kr; rkaufman@sbpdiscovery.org
https://doi.org/10.1038/s41574-021-00510-4

Key points

- Physiological and chronic endoplasmic reticulum (ER) 'stress' exists in healthy β -cells.
- Adaptive unfolded protein response signalling via chaperones maintains ER protein folding homeostasis in healthy β -cells.
- Gene mutations in maturity-onset diabetes of the young exacerbate physiological ER stress, which causes β -cell loss.
- Proinsulin is prone to misfolding and increased insulin production can exacerbate physiological ER stress on the path to type 2 diabetes mellitus.
- The therapeutic inhibition of genes that promote ER stress in β -cells (for example, *CHOP*) might reduce the disease burden for patients with type 2 diabetes mellitus and is worthy of further exploration.

established roles in T2DM. For an in-depth discussion of β -cell stress in T1DM, we encourage readers to refer to a 2020 review¹⁷.

In this Review, we discuss the molecular and cellular mechanisms governing β -cell fate determination in the context of ER stress. We also highlight the UPR signalling pathways involved in the pathogenesis of diabetes mellitus, with a focus on T2DM and monogenic diabetes.

ER protein homeostasis

The ER is the organelle where proteins that will be secreted or that will go to the endomembrane system start their journey after ribosomal translation. Approximately one-third of the metazoan cellular proteome is estimated to translocate across the ER membrane into the lumen and this ratio is probably even higher for pancreatic β -cells as >50% of the total mRNA in these cells is dedicated to proinsulin synthesis and processing¹⁸. In the ER lumen, proteins fold into their proper 3D structures and are edited by post-translational modifications, including glycosylation, hydroxylation, lipidation and disulfide bond formation, in order to attain their biological functions^{9,11}.

The ER has a tight surveillance system for protein quality control to ensure that only properly folded and modified proteins traffic to the Golgi apparatus for further processing. Protein unfolding and/or misfolding in the ER occurs frequently owing to many extracellular and intracellular physiological insults. These include pharmacological intoxication and genetic mutation of client proteins (the proteins to be folded, also known as substrate proteins) or of their counterpart ER chaperone proteins (which assist with folding). Importantly, the elevated expression of client proteins is also associated with protein misfolding such as proinsulin in the context of prediabetes and early-stage T2DM^{9,12,19}. Evidence even suggests that insulin mRNA is increased in people with a genetic predisposition to T1DM²⁰. As a consequence, the accumulation of unfolded and/or misfolded proteins in the ER lumen disturbs ER homeostasis and activates the UPR²¹.

The unfolded protein response

The UPR is mediated mainly through three ER transmembrane proteins: serine–threonine protein kinase–endoribonuclease IRE1 α , protein kinase R-like ER kinase (PERK, also known as EIF2AK3) and cAMP-dependent

transcription factor ATF6 (REF.¹³) (FIG. 1). Under homeostatic conditions, IRE1 α , PERK and ATF6 are bound to and inhibited by the ER chaperone BiP (also known as HSPA5), a peptide-dependent ATPase of the HSP70 protein family member localized to the ER lumen.

IRE1 α is an ER transmembrane protein with dual serine–threonine kinase and endoribonuclease activities that are attributable to tandem and distinct cytosolic domains. When the IRE1 α ER-luminal domain is released from BiP inhibition under conditions of ER stress²², IRE1 α dimerizes for transphosphorylation and activation of its endoribonuclease activity, thereby enabling it to cleave the pre-mRNA encoding X-box binding protein 1 (XBP1). This event initiates the removal of an intron to produce a transcriptionally active transcription factor, XBP1s²³. XBP1s induces the expression of many target genes that encode proteins with functions in ER protein folding, protein translocation into the ER, trafficking and ER-associated degradation^{24–26}. In parallel, upon release from BiP, PERK dimerizes, becomes activated and phosphorylates the α -subunit of the eukaryotic translation initiation factor 2 (known as eIF2 α , which is encoded by *EIF2S1*) at Ser51, leading to the rapid and transient attenuation of general mRNA translation^{27–30}. Paradoxically, the translation of several specific mRNAs is preferentially enhanced in the context of general translational inhibition, including ATF4, which plays an important role in antioxidant response and recovery of protein synthesis^{31,32}. Finally, ATF6 is the third major UPR transducer protein and is a type II transmembrane protein that contains a cytosolic cAMP-responsive element-binding–basic leucine zipper domain. Once released from BiP, ATF6 traffics from the ER to the Golgi complex, where it is cleaved by the sequential action of the membrane-bound transcription factor site 1 and site 2 proteases. This action liberates an ATF6 p50 cytosolic fragment from the N terminus of ATF6 that acts as a potent transcription factor to induce its target genes³³.

Adaptive UPR prevents β -cell failure

The essential roles of the UPR transducers in pancreatic β -cells are well established by gain-of-function and loss-of-function studies in mouse models as well as by studies from human patients with specific mutations such as those with monogenic diabetes. For example, the deletion of *Perk* (also known as *Eif2ak3*) causes β -cell failure in mice³⁴ and the mutation of *PERK* causes β -cell failure in humans with neonatal diabetes mellitus⁶. In addition, the mutation of Ser51 to Ala in eIF2 α , which is the site of phosphorylation by PERK, also causes β -cell failure similar to *Perk* deletion in a mouse model^{29,35}, indicating that the requirement of PERK for β -cell function is through the phosphorylation of eIF2 α . The second UPR transducer, ATF6, is also important for β -cell function. ATF6 deficiency accelerates diabetes in mice fed a high-fat diet³⁶. Furthermore, genetic polymorphisms in *ATF6* are associated with prediabetes in several human populations^{37,38}. Although no *IRE1* mutations have been identified in patients with monogenic diabetes, mice without *Ire1* in β -cells display β -cell failure and develop diabetes owing to defective proinsulin

synthesis²⁶. Importantly, the defect in *Ire1* results from a loss of glucose-stimulated proinsulin synthesis as a consequence of the defective induction of gene products required for preproinsulin translocation and processing in the ER²⁶. In addition, downstream targets of the UPR transducers proved essential for β -cell integrity. For example, *Xbp1* deletion in mice decreases the number of insulin granules in β -cells and leads to glucose intolerance as well as to blunted glucose-stimulated insulin secretion³⁹.

As a major suppressor of UPR signalling in the ER lumen, the chaperone activity of BiP also seems essential for β -cell physiology. For example, SIL1, a nucleotide exchange factor for BiP, is essential for the maintenance of β -cell mass in mice and can prevent β -cell apoptosis from occurring owing to increased ER stress⁴⁰. Furthermore, the expression of a partial loss-of-function variant of ERDJ4, another BiP co-chaperone, causes constitutive ER stress and β -cell dysfunction in mice⁴¹. Moreover, mouse and human genetic deficiency of *DNAJC3* (otherwise known as *ERDJ6*), encoding the BiP

co-chaperone p58^{IPK}, causes early-onset diabetes mellitus in humans and mice^{42,43}. The mutation of *DNAJC3* is a recessive disorder that causes monogenic diabetes in humans^{44,45}. Conversely, the overexpression of BiP protects β -cell function in mouse T2DM models^{45,46}. In addition, physiological ER stress induces protein expression of mesencephalic astrocyte-derived neurotrophic factor (MANF), which in turn enhances the proliferation of β -cells in vitro and in vivo in a low-dose streptozotocin-induced diabetic mouse model⁴⁷. Lastly and importantly, the ER protein quality control system in β -cells is also considered an essential aspect for the maintenance of optimal β -cell function, by maintaining protein homeostasis in the ER via the ER-associated protein degradation machinery (this topic is comprehensively reviewed in REF.⁴⁸). Taken together, ample evidence from genetic studies demonstrates that both the functional integrity of ER homeostasis and the UPR are essential for β -cell function and health.

ER stress is linked to human β -cell failure

The failure to maintain ER homeostasis in β -cells leads to their loss of function and cell death, and further causes diabetes mellitus in humans that can be categorized into two main groups. The first is monogenic diabetes, which is a spectrum of disorders that are clinically subdivided based on the age of onset into so-called maturity-onset diabetes of the young (MODY) (TABLE 1), neonatal diabetes mellitus or early-onset diabetes mellitus. Most loci associated with monogenic diabetes are known to be directly involved in the maintenance of β -cell function, with some genes specifically related to ER stress-mediated β -cell dysfunction; the more severe the defect, the earlier the onset of disease. The second is T2DM, which does not occur during the neonatal period. T2DM is influenced to a much greater degree than monogenic diabetes by β -cell-extrinsic physiological insults (for example, glucolipotoxicity and redox status imbalance) that lead to a decrease in ER protein folding efficiency. Of note, T1DM-associated autoimmune response-derived ER stress in comparison with T2DM has already been summarized¹⁷ and will not be discussed here.

Monogenic diabetes

T2DM is polygenic, whereas some rare forms of diabetes result from mutations in a single gene. So-called monogenic diabetes accounts for 1–5% of all patients with diabetes mellitus in Europe⁴⁹. In this subsection, we discuss how ER stress is involved in the pathogenesis of monogenic diabetes.

Defects in MODY genes can cause ER stress. Fourteen forms of MODY have been proposed, with mutations occurring in genes encoding transcription factors as well as in genes related to lipid and glucose metabolism and the gene that encodes insulin (TABLE 1). MODY-1 is caused by a loss-of-function mutation in the gene encoding hepatocyte nuclear factor 4 α (*HNF4A*). The mechanism by which the loss of HNF4 α mediates β -cell dysfunction in MODY-1 is currently unclear. However, a 2012 study suggests that HNF4 α transcriptionally

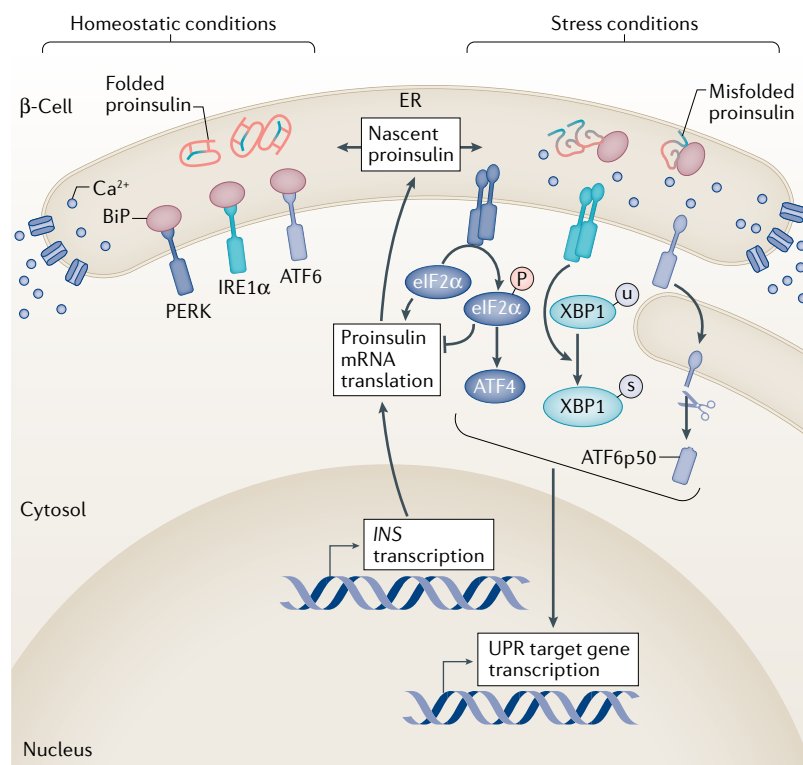


Fig. 1 | ER stress and the UPR pathways in β -cells. Increased proinsulin synthesis is a major direct cause of physiological endoplasmic reticulum (ER) stress in β -cells. Misfolded proinsulin in the ER binds to and titrates away the molecular chaperone BiP from the unfolded protein response (UPR) sensors. These UPR sensors are three ER transmembrane proteins, serine–threonine protein kinase–endoribonuclease IRE1 α , protein kinase R-like ER kinase (PERK) and cyclic AMP-dependent transcription factor ATF6. Activated PERK phosphorylates the eukaryotic translation initiation factor 2 on a serine residue (Ser52 for human protein EIF2S1), which generally inhibits all translation. UPR signalling also activates multiple transcription factors, for example, XBP1 splicing and translation, ATF4 translation and ATF6 translocation to Golgi apparatus for proteolytic processing. The translocation of the transcription factors into the nucleus activates stress response genes that play important roles in mitigating the ER stress initially but could lead to cell death with chronic ER stress. P, phosphorylation; S, spliced; U, unspliced.

Table 1 | Evidence of ER stress caused by MODY gene mutations

| MODY subtype ^a | Gene symbol | Gene class | References demonstrating a link to ER stress in β -cells |
|---------------------------|----------------|------------------------|---|
| MODY-1 | <i>HNF4A</i> | Transcription factor | Sato et al., 2012 (REF. ⁵⁰) |
| MODY-2 | <i>GCK</i> | Glucose-sensing enzyme | Matschinsky et al., 1993 (REF. ⁵¹), van Buerck et al., 2012 (REF. ⁵³), Shirakawa et al., 2013 (REF. ⁵⁴) |
| MODY-3 | <i>HNF1A</i> | Transcription factor | Yamagata et al., 1996 (REF. ⁵⁵), Kirkpatrick et al., 2011 (REF. ⁵⁶) |
| MODY-4 | <i>PDX1</i> | Transcription factor | Sachdeva et al., 2009 (REF. ⁶¹) |
| MODY-5 | <i>HNF1B</i> | Transcription factor | None reported |
| MODY-6 | <i>NEUROD1</i> | Transcription factor | None reported |
| MODY-7 | <i>KLF11</i> | Transcription factor | None reported |
| MODY-8 | <i>CEL</i> | Fat metabolism | None reported |
| MODY-9 | <i>PAX4</i> | Transcription factor | Mellado-Gil et al., 2016 (REF. ⁶⁸) |
| MODY-10 | <i>INS</i> | Hormone | Liu et al., 2010 (REF. ⁷⁰) |
| MODY-11 | <i>BLK</i> | Kinase | None reported |
| MODY-12 | <i>ABCC8</i> | ABC transporter | None reported |
| MODY-13 | <i>KCNJ11</i> | Ion channel | None reported |
| MODY-14 | <i>APPL1</i> | Adaptor protein | None reported |

ER, endoplasmic reticulum; MODY, maturity-onset diabetes of the young. ^aThe list of MODY sub-types from www.OMIM.org was accessed in March 2021.

activates the BiP-binding protein ankyrin repeat and SAM domain-containing protein 4B (*ANKS4b*)⁵⁰. Increased expression of *Anks4b* in mice and in mouse cell lines sensitized β -cells to ER stress, and decreased expression of *Anks4b* protected cells from ER stress-induced apoptosis. Given the importance of BiP in ER stress, the HNF4 α -mediated induction of ANKS4b might affect ER stress-mediated β -cell dysfunction.

MODY-2 mutations affect glucokinase, a member of the hexokinase family expressed mainly in hepatocytes and pancreatic β -cells. Genetic defects in glucokinase disrupt β -cell function and cause sustained hyperglycaemia that is sufficiently mild that many patients do not require treatment⁵¹. In one French cohort, mutant glucokinase caused insufficient insulin secretion from pancreatic β -cells by increasing the threshold of the circulating concentrations of glucose required to induce insulin secretion, thereby leading to chronic hyperglycaemia⁵². In mice with the same glucokinase missense mutations as seen in patients with MODY-2, islets display β -cell defects and upregulated expression of CHOP, a pro-apoptotic transcription factor involved in the ER stress response⁵³. By contrast, the chemical activation of glucokinase in mouse islets can activate pathways that promote β -cell survival, including under conditions of ER stress⁵⁴.

MODY-3 is caused by loss-of-function mutations in the gene encoding hepatocyte nuclear factor 1 α (*HNF1A*)⁵⁵, which lead to a primary defect in β -cell function. Specifically, when a loss-of-function, dominant-negative HNF1 α mutant was expressed in an insulin-secreting cell line, cells were sensitized to ER stress owing to the downregulation of XBP1 transcription and BiP protein expression⁵⁶. Mice with transgenic expression of a loss-of-function mutant HNF1 α

displayed a diabetic phenotype at 6 weeks of age, recapitulating the MODY-3 phenotype⁵⁷. Interestingly, in islets from these mice, β -cells were sensitized to ER stress with a highly disorganized and dilated ER structure⁵⁷. As a consequence, these islets contained less insulin than wild-type mice, suggesting that the UPR is intimately involved in maintaining optimal in vivo insulin function in healthy islets¹².

The gene mutated in MODY-4 encodes pancreas-duodenum homeobox protein 1 (*PDX1*), a transcription factor important for the maintenance of β -cell identity and for the regulation of β -cell function⁵⁸. Indeed, *Pdx1* deficiency in mice increases β -cell susceptibility to ER stress-associated cell death⁵⁹. In addition, *PDX1* directly regulates genes involved in the stress response⁶⁰, UPR signalling⁶¹ and ER homeostasis, including the gene encoding sarcoplasmic-endoplasmic reticulum calcium ATPase 2 (*SERCA2*), which pumps Ca²⁺ from the cytosol into the ER⁶². Together, these findings from studies in mice suggest that β -cell dysfunction associated with *Pdx1* defects is partially due to an inability to manage physiological ER stress. Evidence also points to the translocation of *PDX1* from the nucleus to the cytoplasm via ER stress-related mechanisms⁶³, perhaps driven by pro-survival factors like autocrine insulin signalling⁶⁴.

The gene mutated at the MODY-9 locus encodes paired box protein pax 4 (*PAX4*), another transcription factor that is relevant in the development and differentiation of pancreatic β -cells^{65,66}. In addition, *Pax4* overexpression selectively in pancreatic β -cells preserved these cells after streptozotocin-induced cell death in mice; however, the long-term overexpression of *Pax4* reduced insulin secretion and possibly caused the dedifferentiation of mature β -cells⁶⁷. In addition, in a similar mouse model of *Pax4* overexpression, β -cell death triggered by inducers of ER stress was decreased, accompanied by the upregulation of genes involved in the maintenance of ER integrity⁶⁸. *Pax4* overexpression also improved Ca²⁺ homeostasis in the ER lumen, decreased sensitivity to thapsigargin-induced ER morphological changes and improved glucose-induced Ca²⁺ oscillations⁶⁸.

The gene encoding insulin (*INS*) is responsible for MODY-10, also known as mutant insulin gene-induced diabetes of youth (*MIDY*)⁵. As the major protein synthesized and processed in β -cells, mutations in *INS* lead to β -cell dysfunction or death through the accumulation of misfolded proinsulin in the ER. The mutations are located either in one of six cysteines that directly affect the disulfide bond formation necessary for proper proinsulin folding in the ER⁶⁹ or in non-cysteine residues that can also affect the folding efficiency of proinsulin⁵ and consequently cause ER stress. Intriguingly, although most *MIDY* mutations arise de novo, the mutated genes are dominantly inherited in mouse models. A mechanism was proposed in which the mutant misfolded proinsulin captures wild-type proinsulin in the ER and prevents its trafficking to the Golgi and maturation. In support of this hypothesis, heterozygous proinsulin mutants interact with wild-type proinsulin and retain it in the ER. For example, more than 50% of wild-type proinsulin was misfolded in islets of Akita mice, which have a Cys missense mutation in *Ins2* (REF.⁷⁰). However,

another possibility is that the proinsulin mutant disrupts wild-type proinsulin folding by altering the ER protein folding environment⁹.

Collectively, studies of MIDY mutations as a cause of β -cell failure suggest that both balanced proinsulin synthesis and the strict 3D structural constraint are critically needed for correct proinsulin folding in the ER as well as for proper insulin secretion to exert bioactivity⁷¹. Reversely, defects in either parameter (synthesis or coding sequence) predispose to nascent proinsulin misfolding in the ER lumen of β -cells^{12,71}. Interestingly and importantly, mouse and human stem cell studies demonstrated that mutations that reduce proinsulin production but that do not impair the folding of proinsulin molecules reduce ER stress^{72,73}. These findings are consistent with the reduced ER stress observed in β -cells of adult male mice with controlled *Ins* gene ablation^{12,19}. Additionally, any further compensatory and increased proinsulin synthesis will lead to excessive, chronic ER stress in β -cells⁹.

Collectively, many MODY genes are linked to β -cell ER stress. In addition, other MODY genes that are not mentioned here show some relevance to ER stress in other cell types during diabetes. Therefore, the modulation of ER stress might be beneficial to treat patients with MODY.

Neonatal diabetes mellitus and early-onset diabetes mellitus. The most well-known neonatal diabetes mellitus genes related to ER stress are *PERK* and *WFS1*. Wolcott–Rallison syndrome is a rare recessive disease characterized by neonatal diabetes mellitus with skeletal dysplasia and growth retardation and caused by mutations in *PERK*⁶. The mouse model of *Perk* deficiency also shows the same phenotype³⁴ as patients with Wolcott–Rallison syndrome, with the consistent feature of severe insulin-dependent diabetes mellitus developing in infancy. Although the pathophysiological basis for the pancreas phenotype was not characterized in human patients with Wolcott–Rallison syndrome⁶, the most striking feature in *Perk*-deficient mice was the extensive death of endocrine and exocrine pancreatic cells, especially the pancreatic β -cells, but not the α -cells³⁴. This finding suggests that *PERK* is particularly important for β -cell survival.

In the UPR, the phosphorylation of eIF2 α by *PERK* serves as a protein synthesis brake that alleviates the protein load of the ER upon ER stress (FIG. 1). Multiple lines of evidence show that defective *PERK* signalling can trigger proinsulin misfolding. For example, in *Perk*-null mice, ER distention (a morphological indicator suggesting ER stress) was observed by electron microscopy in pancreatic β -cells³⁴. Findings from eIF2 α phosphorylation-defective transgenic mice support a model where *PERK* acts through phosphorylated eIF2 α to attenuate the synthesis of proinsulin (and other proteins), which decreases the rate of protein influx into the ER and thereby limits ER stress^{29,35}. In mouse models, the absence of either *PERK*⁷⁴ or eIF2 α phosphorylation³¹ is associated with oxidative stress in cells, with the latter playing a causal role in impairing β -cell function. Notably, the antioxidant treatment of mice with defective eIF2 α phosphorylation increased β -cell function

and survival, indicating that oxidative stress causes β -cell failure³⁵. In addition, the missense mutation of *EIF2B1* (encoding a protein subunit of the eIF2B complex, which acts as a GTP exchange factor to reactivate eIF2) also causes permanent neonatal diabetes mellitus in humans⁷⁵. This finding further supports the requirement for the functional phosphorylation of eIF2 α by *PERK* to maintain pancreatic β -cell function and health.

Wolfram syndrome is an autosomal-recessive neurodegenerative disorder characterized by early-onset diabetes mellitus and optic atrophy, with the non-autoimmune loss of β -cells occurring as a result of a mutation in *WFS1*, which encodes Wolframin⁷⁶. In patients with Wolfram syndrome, overt diabetes develops at a median age of 6 years⁷⁷. Several molecular mechanisms by which Wolframin deficiency affects β -cell function were proposed, some of which could be explained by constitutive ER stress occurring because of the *WFS1* mutation⁷⁸. As an ER membrane protein, Wolframin positively regulates ER Ca²⁺ levels by modulating Ca²⁺ channel activity or by interacting with calmodulin, which results in increased Ca²⁺ uptake^{79,80}. Therefore, the deficiency of Wolframin might disturb Ca²⁺ homeostasis in the ER, resulting in ER stress. Of note, inhibitors of ER Ca²⁺ release channels were identified as candidates for Wolfram syndrome drug therapy^{81–83}. The expression of *WFS1* is induced by the IRE1 α –XBP1s pathway of the UPR, which might account for the requirement for IRE1 α in β -cells²⁶. In addition, Wolframin also regulates the UPR by the proteosomal degradation of ATF6 through the E3 ubiquitin-protein ligase synoviolin (*SYVN1*, also known as *HRD1*), the E3 ubiquitin ligase in the ER-associated degradation pathway⁸¹. Taken together, these studies suggest that *WFS1* mutations identified in humans cause β -cell dysfunction that leads to diabetes mellitus in an ER stress-dependent mechanism⁷⁸.

Type 2 diabetes mellitus

T2DM is the most common human metabolic disorder and is characterized by insulin resistance and hyperinsulinaemia, leading to hyperglycaemia. This section discusses the evidence indicating that ER stress contributes to the pathogenesis of T2DM.

Physiological ER stress in T2DM interferes with β -cell function. Insulin synthesis and basal insulin secretion are both elevated during the early phase of T2DM, which is traditionally considered as compensation for increased peripheral insulin resistance in liver, muscle and adipose tissue. Increased proinsulin synthesis is believed to be a major direct cause of ER stress in β -cells in prediabetes and early-stage T2DM^{9,84,85}. Supporting this notion, the acute reduction of insulin synthesis relieves ER stress in β -cells and promotes β -cell proliferation in mice^{12,19}.

As a principle, both active and inactive subpopulations of the three UPR sensors coexist in healthy β -cells, with the inactive subpopulation sequestered through BiP binding to their ER-luminal domains²². Increased protein synthesis sequesters BiP by recruitment to proinsulin to facilitate protein folding (FIG. 1), thereby releasing the UPR sensors for activation and signalling^{6,13,19}. Of note, the function of the *PERK* branch of the UPR pathways

to fine-tune the rate of new protein synthesis through eIF2 α phosphorylation and dephosphorylation^{6,29,35} is considered especially important in the coordination of proinsulin synthesis¹⁷ as well as of proinsulin translocation into the ER for protein folding.

CHOP is a downstream transcription factor in the PERK–eIF2 α pathway and is considered an important signal transducer in coordinating insulin synthesis. This effect occurs partly through CHOP modulating the expression of protein phosphatase 1 regulatory subunit 15A (PPP1R15A, also known as GADD34), which encodes a regulatory essential component of the eIF2 α phosphatase complex, protein phosphatase 1 (PP1), that dephosphorylates eIF2 α ⁸⁶. In the *db/db* leptin-receptor deficient mouse model of T2DM, chronic ER stress leads to CHOP-dependent β -cell death and *Chop* gene deletion attenuated β -cell death by reducing ER stress and oxidative stress, thereby rescuing the diabetic phenotype of these mice⁸⁷.

By contrast, the increased insulin demand that occurs after long-term hyperglycaemia also stimulates β -cell proliferation in *db/db* and Akita mouse islets⁸⁸. This effect was reported to be mediated through the ATF6 adaptive branch of the UPR⁸⁸.

Effects of local inflammation on β -cell ER stress in T2DM. During the development of T2DM, an inflammatory environment might arise within islets that could have considerable effects on β -cell function and survival, although this hypothesis remains somewhat controversial^{89–91}. For example, the histological analysis of pancreas tissue obtained post-mortem from patients with T2DM revealed active inflammation in islets, including the presence of proinflammatory cytokines^{92,93}, immune cell infiltration^{89,94} and amyloid deposits in β -cells⁹⁵; such changes could eventually lead to the further deposition of islet amyloid polypeptide as well as to fibrosis and β -cell apoptosis⁹⁶. From the cellular stress perspective, several cytokines were reported to induce ER stress and to exert detrimental effects on β -cells. For example, in prediabetic *db/db* male mice, physiological levels of IL-1 β and IL-6 reduced ER Ca²⁺ storage, activated UPR signalling and reduced glucose-stimulated insulin secretion from isolated *db/db* mouse islets⁹⁷.

In the pathogenesis of T2DM, elevated circulating levels of pro-inflammatory cytokines and immune cell infiltration in the islets are associated with β -cell dysfunction⁹⁸. Some of this cytokine production originates from islet-resident macrophages^{99,100}; however, chronic hyperglycaemia has been proposed to induce β -cells to produce pro-inflammatory cytokines such as IL-1 β ⁹². Moreover, mild ER stress predisposes primary rat β -cells to the pro-apoptotic effects of IL-1 β by disrupting the balance between the pro-apoptotic and anti-apoptotic Bcl-2 family of proteins, independent of the XBP1 pathway of the UPR¹⁰¹. In contrast to the established detrimental role of IL-1 β in islets, IL-22 and IL-10 were reported to alleviate ER stress initiated either by cytokines or by palmitic acid, both in the MIN6 insulinoma cell line and in mouse and human islets¹⁰². The beneficial effect of exogenous IL-22

administration on metabolism was further confirmed in the leptin receptor-deficient *db/db* mouse model¹⁰³. Therefore, during T2DM-associated inflammation, different cytokines play opposing roles that modify ER stress in β -cells, which in turn correlate with changes in glucose-stimulated insulin secretion.

By contrast, the mechanisms by which ER stress might cause inflammation that leads to β -cell dysfunction are unclear, although one hypothesis has been put forth involving the NLRP3 inflammasome as an executor module to cause β -cell dysfunction^{104,105}. For example, ER stress in β -cells can induce the expression of thioredoxin-interacting protein (TXNIP) through the activation of both the PERK and IRE1 pathways. Furthermore, TXNIP was shown to activate the NLRP3 inflammasome and induce IL-1 β production^{104,105}. By contrast, the NLRP3 inflammasome is dispensable for ER stress-induced β -cell dysfunction in Akita mice¹⁰⁶, a model of proinsulin misfolding-induced β -cell death. The importance of NLRP3 inflammasome activation in T2DM remains to be further explored¹⁰⁶. In our opinion, studies are needed that measure Toll-like receptor activation and downstream pathways in response to ER stress.

Glucotoxicity contributes to β -cell ER stress. Pancreatic β -cells are intrinsically sensitive to blood levels of glucose, in that increased glucose concentration is tightly coupled with increased proinsulin synthesis and insulin secretion^{9,85}. However, chronically elevated blood concentrations of glucose outside the physiological range are detrimental to β -cells. Furthermore, insulin resistance occurs in peripheral tissues during the progression to T2DM. In response, β -cells compensate by increasing insulin production, which exacerbates ER stress^{35,84,85} (FIG. 2).

Studies published in 2019 demonstrated that the increased rate of proinsulin synthesis occurring in response to insulin resistance and/or high blood concentrations of glucose increases proinsulin misfolding in the ER as detected by the formation of disulfide-linked proinsulin complexes^{85,107}. Proinsulin has three disulfide bonds formed between amino acid positions 6 and 11 on the A-chain (A6–A11), between A7 and B7 on the B-chain (A7–B7), and between A20 and B19 (REFS^{11,108}). These oligomers of proinsulin are even observed at low levels in healthy mouse and human islets and an increase in their formation is the first molecular event identified that quantitatively correlates with the progression from prediabetes to overt diabetes in *db/db* mice⁸⁵. One cause of proinsulin misfolding involves a strong intermolecular disulfide bond between B19 in one proinsulin molecule and B19 in an adjacent proinsulin molecule, which competes with the productive B19–A20 intramolecular disulfide bond⁸⁵. Increased proinsulin synthesis causes an accumulation of these disulfide-linked multimers in the ER, which seems to correlate with an increased ER stress response. We expect that novel small molecules able to prohibit the B19–B19 linkage⁸⁵ will prevent the progression from prediabetes to T2DM.

Chronic supra-physiological ER stress in β -cells disrupts intracellular metabolic homeostasis and gene expression^{109,110}, which might skew the flux of

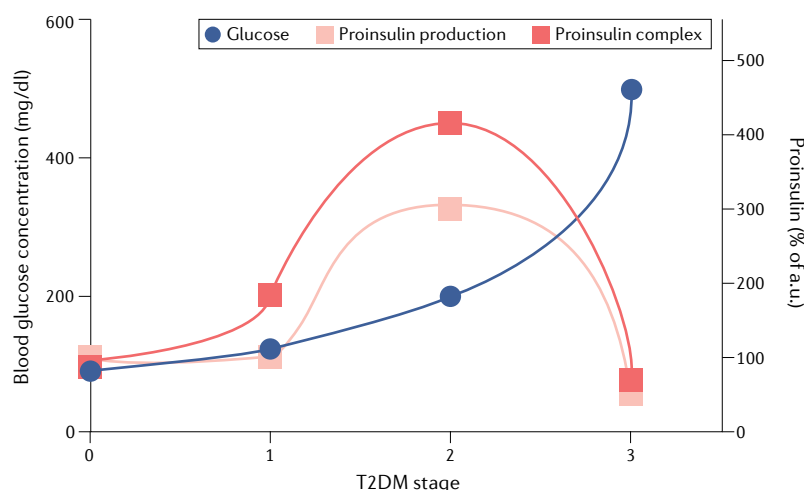


Fig. 2 | Islet dysfunction during the development of T2DM. Our working model presents multiple stages of β -cell failure during different stages of type 2 diabetes mellitus (T2DM) and predicts that proinsulin misfolding in the endoplasmic reticulum is a key early feature of pancreatic β -cell demise in animal models and humans during the development of T2DM. Stage 0, normal blood glucose, with normal pancreatic insulin and proinsulin content; stage 1, normal blood glucose, with high pancreatic insulin and proinsulin content; stage 2, abnormal blood glucose, with lower pancreatic insulin, in combination with high pancreatic proinsulin-to-insulin ratio; stage 3, high blood glucose, with low pancreatic insulin and proinsulin content. Proinsulin complex, high molecular weight, intermolecular disulfide cross-linked proinsulin molecules ($n \geq 2$), with or without other covalently linked non-proinsulin molecules which contain at least a reactive cysteine. Right axis, 100% refers to 'proinsulin complexes' found in healthy islets, using a specific proteomic assay. a.u., arbitrary unit.

metabolites and bioenergetic properties appropriate for islet electrophysiological activity¹¹¹. These changes might eventually lead to β -cell death, a scenario supported by a 3–10-fold increase in β -cell apoptosis observed in pancreata obtained post-mortem from patients with T2DM compared with those from donors without diabetes⁹⁶. Several hypotheses were proposed to explain the mechanism for increased β -cell death in patients with T2DM. First, increased proinsulin synthesis is accompanied by the production of reactive oxygen species (ROS)¹⁰⁷. As β -cells are intrinsically susceptible to oxidative stress owing to a low level of antioxidant enzyme expression¹¹², the increased generation of ROS is considered one of the main factors responsible for β -cell apoptosis¹¹² and dedifferentiation^{113,114}. Whether the 'ROS susceptibility' hypothesis applies to human β -cells is less clear, which warrants further investigation.

The second hypothesis relates to Ca^{2+} concentrations in the ER. It is well established that, upon acute glucose stimulation, accelerated β -cell metabolism occurs, which increases Ca^{2+} pumping into the ER via SERCA2 (REFS^{115,116}). Notably, the concentration of Ca^{2+} in the ER ($[\text{Ca}^{2+}]_{\text{ER}}$) plays a key role in the proper function of several ER-resident molecular chaperones and foldases^{117–119} as well as in the processing of proinsulin¹²⁰. Consequently, $[\text{Ca}^{2+}]_{\text{ER}}$ orchestrates chaperone activity in order to adapt the ER folding machinery to accommodate the increased protein synthetic load triggered by glucose stimulation in β -cells^{121–123}. Therefore, the chronic hyperglycaemic condition that occurs in T2DM could plausibly disrupt the Ca^{2+} buffering and storage

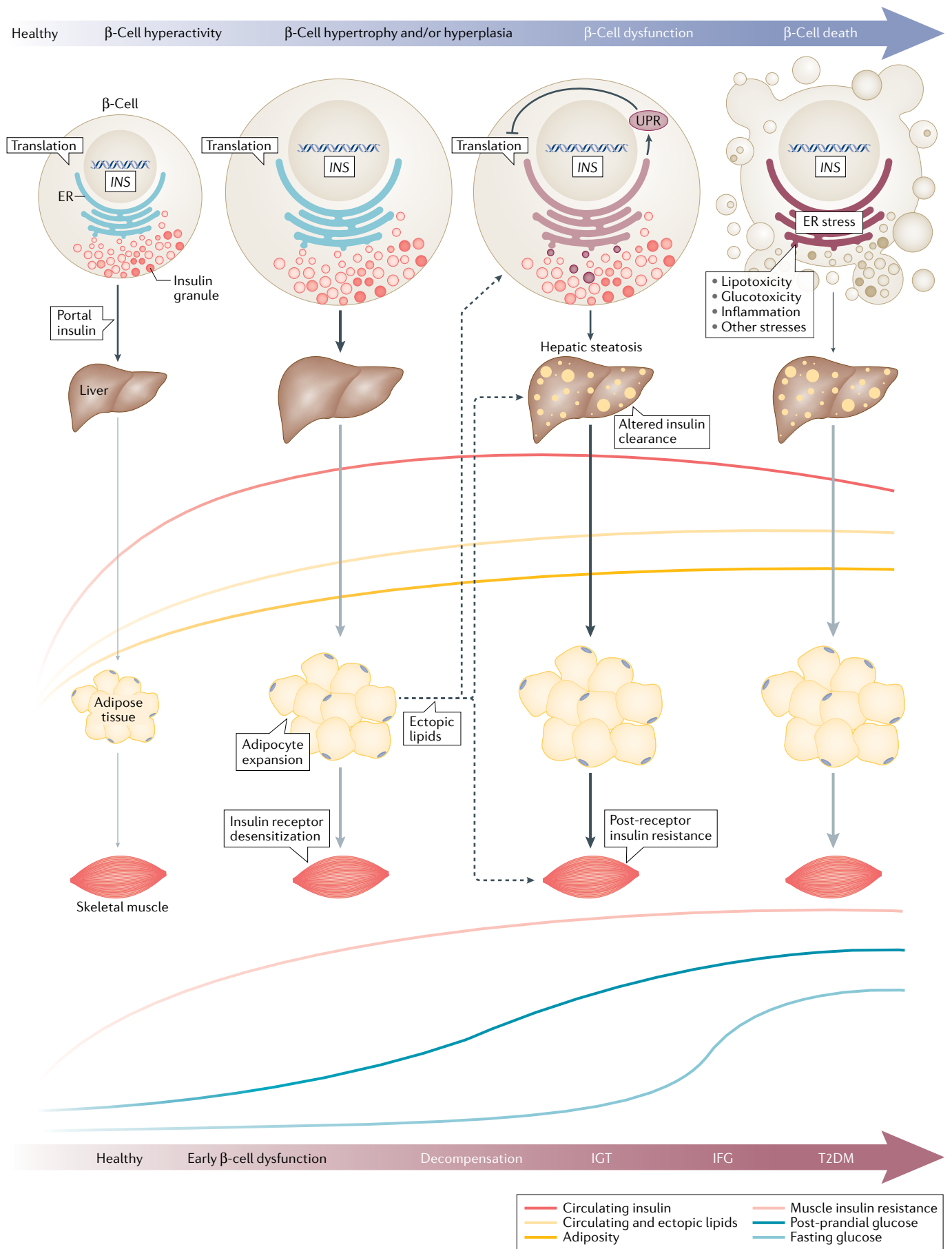
functions of the ER that are required to prevent excessive ER stress in β -cells. Furthermore, studies demonstrated the mechanism by which ATP import into the ER is tightly coupled with the cytosolic concentration of Ca^{2+} (dubbed CaATiER; Ca^{2+} -antagonized ATP transport into the ER)¹²⁴. These findings further implicate that chronic, supra-physiological ER stress could considerably affect insulin secretion¹²⁵ and β -cell fate. Indeed, in 2020, an experimental islet model confirmed that pharmacological ER stress induced by tunicamycin promotes Ca^{2+} -dependent basal insulin hypersecretion, possibly causing islet super-activity with even more proinsulin synthesis¹²⁵, which produces a 'vicious cycle' of further ER stress and β -cell dysfunction for T2DM development¹²⁶ (FIG. 3).

In the third hypothesis, the modification of cellular proteins by advanced glycation end-products (AGEs) was proposed to constitute another potential death mechanism for ER stress-mediated β -cell death¹²⁷. The formation of AGEs is increased in cultured islets exposed to long-term high glucose conditions¹²⁸. However, we consider this mechanism less likely to be relevant for in vivo ER stress-mediated β -cell death than other mechanisms. Of note, the deletion of fructosamine-3-kinase (FN3K) in mice, a ubiquitous enzyme that is important for intracellular protein deglycation, did not exacerbate β -cell glucotoxicity¹²⁹. By contrast, systemic administration of AGEs can exert deleterious effects by promoting ER stress in β -cells in mice¹³⁰. A direct causal role for AGEs in ER stress-mediated β -cell death has yet to be established in vivo.

Therapeutic manipulation of β -cell stress

Adult human pancreatic islets exhibit very low or no β -cell turnover^{7,96,131}. In the context of prediabetes and early-stage T2DM, the adaptation of islets to secrete more insulin to meet the needs of the body from unchanged β -cell mass indicates that insulin synthesis in mature β -cells is upregulated by metabolic demand. As discussed earlier, the compensatory increase in proinsulin synthesis during the development of insulin resistance is accompanied by increased proinsulin misfolding in the ER (FIG. 2), further aggravating ER stress and eventually leading to β -cell death. Supporting this notion, increased β -cell apoptosis was observed in islets from patients with late-stage insulin-dependent T2DM⁹⁶, whereas others found no change in β -cell mass of patients with early-stage T2DM¹³². Interventions aimed at reducing proinsulin synthesis-associated ER stress to preserve β -cell mass¹² and insulin secretion function (namely 'functional β -cell mass') are currently under investigation to provide a novel T2DM therapy.

One of the hallmarks of individuals with metabolically unhealthy obesity and/or prediabetes or early T2DM is chronic fasting hyperinsulinaemia. Hyperinsulinaemia might contribute to the development of nonalcoholic fatty liver disease (NAFLD) directly via actions on hepatocyte lipid homeostasis and indirectly via adipocyte expansion and lipid spill-over. The causal role of hyperinsulinaemia in hepatic steatosis and subsequently in T2DM is being increasingly accepted¹²⁶ (FIG. 3). Correcting this early β -cell functional defect



◀ Fig. 3 | **The association of β -cell ER stress with insulin hypersecretion, hepatic steatosis, adiposity and insulin resistance.** In this working model of endoplasmic reticulum (ER) stress during the development of prediabetes and type 2 diabetes mellitus (T2DM), insulin hypersecretion is a key functional defect, both causing and being caused by increased ER stress levels in β -cells. Our model also illustrates the effects of hyperinsulinaemia on nonalcoholic fatty liver disease, adipocyte expansion and peripheral insulin resistance in multiple tissues. Eventually, unresolved β -cell ER stress, which triggers the unfolded protein response (UPR), in the face of glucolipotoxicity, inflammation and other stresses, can result in β -cell apoptosis. Hyperinsulinaemia, driven by β -cell hyperactivity and increased functional β -cell mass, causes adipocyte expansion and, combined with additional metabolic stresses, leads to ectopic lipid spill-over into liver and muscle and systemic insulin resistance. Insulin receptor desensitization (that is, insulin resistance) causes further hyperinsulinaemia by overwhelming the insulin clearance capacity. Eventually, β -cells lose their ability to respond effectively to glucose through dysfunction and sometimes death, marking the transition from prediabetes to T2DM. IFG, isolated fasting glucose; IGT, impaired glucose tolerance; post-receptor insulin resistance, defect in the insulin signalling cascade irrespective of insulin receptor abnormality.

could be a promising first step to treat metabolic syndrome. Insulin-deficient mouse models confirmed that targeting pancreatic β -cells to pre-emptively correct hyperinsulinaemia is beneficial¹³³. Specifically, mice with a reduced insulin gene dosage, which are incapable of diet-induced hyperinsulinaemia, were shown to be protected from systemic insulin resistance, obesity and hepatic steatosis as well as to have extended longevity and a reduced risk of cancer^{133–135}. Similarly, inducible partial insulin gene deletion was found to cause a loss of adipose tissue mass in already obese adult mice¹³⁶. Supporting the notion established from mouse models with insulin gene dosage modulation, a 2021 meta-analysis of 60 studies with 112 cohorts containing a total of 5,603 participants found statistically significant associations between period 1 (earlier period) fasting insulin level and period 2 (later period) BMI, indicating that changes in fasting insulin levels precede changes in weight in humans¹³⁷.

Complementary results were shown using a mouse model of *Chop* gene deletion in β -cells, as germline *Chop* deletion reduces ER stress and prevents β -cell death; however, a cell-autonomous role of *Chop* was not established⁸⁷. Preliminary findings (published in a pre-print) from a β -cell-specific *Chop* gene depletion mouse model show that β -cell-specific *Chop* gene depletion corrected the hepatic steatosis induced by either high-fat diet feeding or by ageing¹³⁸. These animals also display increased glucose tolerance under a hyperglycaemic clamp condition¹³⁸ with improved diurnal rhythm in metabolism (J.Y. and R.J.K., unpublished observations). Notably, the β -cell-specific *Chop* gene depletion mouse model produced similar results to mice with reduced insulin synthesis, in that the pancreatic β -cells not only show reduced ER stress but also had reduced insulin mRNA expression and delayed insulin secretion under physiological glucose levels¹³⁸. Importantly, GLP1-conjugated *Chop* antisense oligonucleotides (GLP1-*Chop* ASO) demonstrated good efficacy in reducing *Chop* expression in islets when administered in vivo¹³⁸, with desirable tissue selectivity and no obvious toxicity¹³⁹. Therefore, *CHOP* might serve as an attractive target for translational T2DM therapeutic development to reduce steatosis and correct NALFD (FIG. 4)¹³⁸.

The foregoing observations made in preclinical models might help us to re-think past views favouring the early implementation of insulin therapy to decrease fasting glucose levels¹⁴⁰. Indeed, clinical studies published in 2020 demonstrate that hyperinsulinaemia drives hepatic de novo lipogenesis in NALFD^{141–143}. These findings highlight that correcting hyperinsulinaemia might be needed as a therapeutic approach for NALFD treatment in T2DM. Specifically, evidence is mounting that hyperinsulinaemia plays an indispensable role in promoting NAFLD through de novo lipogenesis in patients with obesity and NAFLD^{141,143}. For example, in a group of patients with NAFLD, hepatic de novo lipogenesis was discovered to statistically significantly contribute to steatosis: de novo lipogenesis was estimated to contribute to 38% of intrahepatic triglyceride (palmitate) in patients with NAFLD versus 19% in patients with obesity without NAFLD¹⁴¹. The same group also pinpointed that, in human NAFLD, an increase in insulin delivery to the liver and subsequently to the extrahepatic tissues was causal for impaired glucose homeostasis¹⁴². Echoing this study, another group also reported that de novo lipogenesis is elevated in patients with NALFD and T2DM, and further showed that the hepatic level of saturated fatty acids shows a strong negative correlation with hepatic insulin sensitivity¹⁴³. By contrast, evidence from rodent models argues against a causal role for physiological levels of insulin resistance in promoting de novo lipogenesis^{91,144}.

Whether insulin resistance drives compensatory hyperinsulinaemia or vice versa has long been debated. Unsurprisingly, human patients with T2DM are a heterogeneous population, with the causal relationship differing widely between individuals and between ethnic groups. For example, in a 2020 epidemiological study in Chinese adults, insulin resistance showed a stronger association with diabetes mellitus than did β -cell dysfunction when measured by HOMA indexes¹⁴⁵. In our opinion, the exacerbated hyperinsulinaemia versus insulin resistance feedback loop in patients with prediabetes or early-stage T2DM can be reasonably reconciled as a ‘vicious cycle’ (FIG. 4). A theoretical consideration of typical insulin action predicts that hyperinsulinaemia inevitably drives up tissue insulin resistance as a necessary outcome, perhaps through direct insulin receptor desensitization^{146–148}. Targeting ER stress in β -cells could be a promising therapeutic strategy to address dysregulated insulin hypersecretion and thus potentially improve insulin resistance in T2DM and NAFLD^{125,138}, which is reasonably expected to drive further hyperinsulinaemia (FIG. 4).

Conclusions

It is now evident that ER stress, which occurs at least in part as a consequence of increased proinsulin synthesis, contributes to β -cell failure in both T1DM and T2DM in humans. Many factors influence insulin protein synthesis and ER health, including compensatory efforts of β -cells in the face of insulin resistance. The increased proinsulin expression promotes aberrant proinsulin aggregation, including aberrant intermolecular disulfide bonding between neighbouring proinsulin molecules.

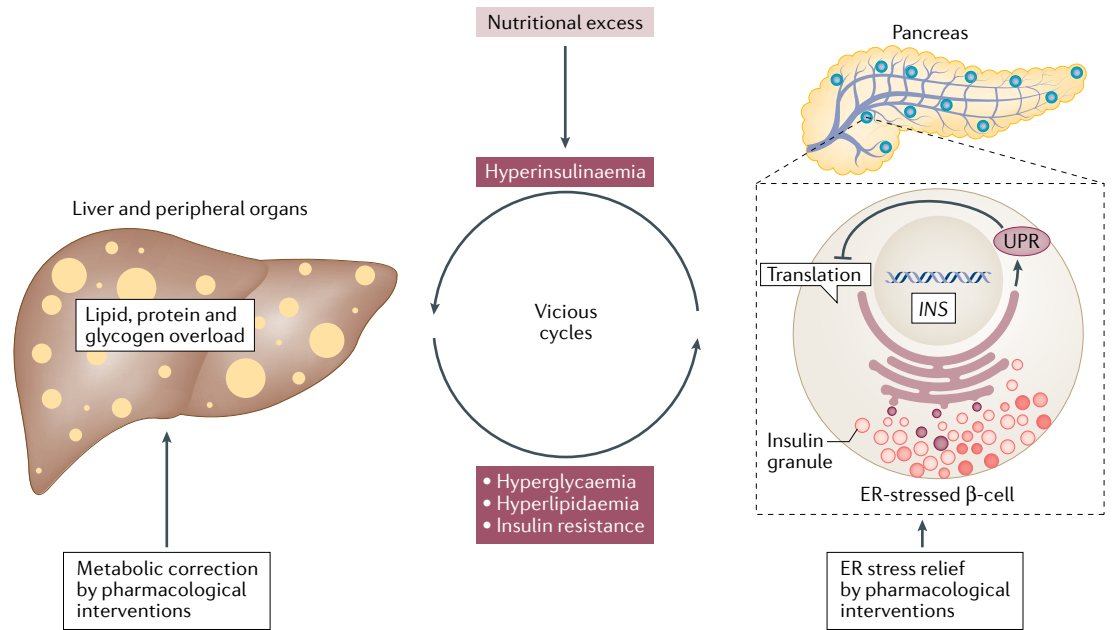


Fig. 4 | Therapeutic intervention to correct vicious cycles in the metabolic syndrome. The traditional view holds that insulin resistance in peripheral organs (for example, liver, muscle and adipose tissue) drives up the demand for insulin production from pancreatic β -cells. In response, the current therapeutic strategies almost exclusively focus on reducing insulin resistance in peripheral tissues, with limited success. However, observations derived from experimental models suggest that targeting endoplasmic reticulum (ER) stress in β -cells could be a promising therapeutic strategy for both type 2 diabetes mellitus and nonalcoholic fatty liver disease. Owing to the causal relationship between increased ER stress in β -cells and uncontrolled insulin hypersecretion, a reasonable therapeutic strategy might be to reduce insulin production in β -cells, which would reduce hyperinsulinaemia and insulin resistance in peripheral tissues. Therefore, we propose that ER stress relief in β -cells by pharmacological interventions should be explored as an alternative strategy and could provide a powerful therapeutic approach. In the ER-stressed β -cell, the different 'coloured' insulin granules represent insulin granules with a low amount of or no insulin crystals, which is often used as morphological evidence for 'ER stress' in β -cells. UPR, unfolded protein response.

This is the earliest molecular defect that has been observed during the prediabetic stage of T2DM development. This propagative misfolding results in complexes with an increased molecular weight that might further disrupt ER function and impair β -cell health, thereby leading to a downward spiral causing β -cell death during T2DM progression.

The key question is how to resolve β -cell ER stress. There is already evidence that many drugs used to treat T2DM have direct and indirect ER stress-relieving actions on β -cells, including GLP1 agonists^{149–152} and thiazolidinediones¹⁵³. Small molecules that improve proper proinsulin folding would be most desirable as they prevent the root cause of ER stress and might be tissue specific. Subsequently, two key questions need to be answered regarding the physiological role of ER stress in pancreatic β -cells: first, how does ER stress alter Ca^{2+} signalling in β -cells in response to nutrients? Second, how does ER stress alter metabolic flux in β -cells in response to nutrients? The complex interplay between cytosolic Ca^{2+} and the ATP import process into the ER, that is, the CaATiER mechanism¹²⁴, might constitute a key regulatory mechanism. This mechanism could explain the crosstalk between metabolic cues and insulin secretion triggered by cytosolic Ca^{2+} signalling, the latter of which is heavily influenced by ER Ca^{2+} efflux or 'leak' from Ca^{2+} channels, for example, inositol trisphosphate

receptors (IP_3Rs) and ryanodine receptors (RyRs)¹⁵⁴. Hypothetically, under long-term ER stress, the increased Ca^{2+} leak from the ER lumen of β -cells inhibits the process of ATP-for-ADP exchange across the ER membrane via the SLC35B1 transporter (also known as AXER)¹⁵⁵. This Ca^{2+} leak could therefore interfere with nutrient sensing to reduce the intracellular ATP levels required for insulin secretion in healthy β -cells. Experimental models with knockout or knockdown of key components in this pathway are crucially needed to validate this hypothesis.

Paradoxically, reducing the insulin production burden and suppressing inappropriate hyperinsulinaemia^{87,134,136,138} might reduce insulin resistance and ameliorate the symptoms of metabolic syndrome. The favourable systemic physiological outcome could be explained by a ' β -cell to hepatocyte' signalling axis (FIGS 3,4) mediated, in large part if not exclusively, via direct and indirect insulin action on hepatocytes. Thus, the successful application of approaches to reduce ER stress in β -cells in humans in the future could both decrease the burden of hyperinsulinaemia and dyslipidaemia in T2DM and considerably improve the comprehensive metabolic status of these patients for a desirable clinical outcome.

Published online: 23 June 2021

1. Saeedi, P. et al. Global and regional diabetes prevalence estimates for 2019 and projections for 2030 and 2045: results from the International Diabetes Federation Diabetes Atlas, 9th edn. *Diabetes Res. Clin. Pract.* **157**, 107843 (2019).
2. Persaud, S. J. & Jones, P. M. A wake-up call for type 2 diabetes? *N. Engl. J. Med.* **375**, 1090–1092 (2016).
3. Weyer, C., Hanson, R. L., Tataranni, P. A., Bogardus, C. & Pratley, R. E. A high fasting plasma insulin concentration predicts type 2 diabetes independent of insulin resistance: evidence for a pathogenic role of relative hyperinsulinemia. *Diabetes* **49**, 2094–2101 (2000).
4. Lysenko, V. et al. Clinical risk factors, DNA variants, and the development of type 2 diabetes. *N. Engl. J. Med.* **359**, 2220–2232 (2008).
5. Liu, M. et al. Proinsulin misfolding and diabetes: mutant INS gene-induced diabetes of youth. *Trends Endocrinol. Metab.* **21**, 652–659 (2010).
6. Delepine, M. et al. EIF2AK3, encoding translation initiation factor 2- α kinase 3, is mutated in patients with Wolcott–Rallison syndrome. *Nat. Genet.* **25**, 406–409 (2000).
7. Butler, A. E. et al. Beta-cell deficit and increased beta-cell apoptosis in humans with type 2 diabetes. *Diabetes* **52**, 102–110 (2003).
8. Wang, S. & Kaufman, R. J. The impact of the unfolded protein response on human disease. *J. Cell Biol.* **197**, 857–867 (2012).
9. Liu, M. et al. Biosynthesis, structure, and folding of the insulin precursor protein. *Diabetes Obes. Metab.* **20** (Suppl 2), 28–50 (2018).
10. Back, S. H. & Kaufman, R. J. Endoplasmic reticulum stress and type 2 diabetes. *Annu. Rev. Biochem.* **81**, 767–793 (2012).
11. Scheuner, D. & Kaufman, R. J. The unfolded protein response: a pathway that links insulin demand with beta-cell failure and diabetes. *Endocr. Rev.* **29**, 317–333 (2008).
12. Yong, J., Itkin-Ansari, P. & Kaufman, R. J. When less is better: ER stress and beta cell proliferation. *Dev. Cell* **36**, 4–6 (2016).
13. Wang, M. & Kaufman, R. J. Protein misfolding in the endoplasmic reticulum as a conduit to human disease. *Nature* **529**, 326–335 (2016).
14. Schroder, M. & Kaufman, R. J. The mammalian unfolded protein response. *Annu. Rev. Biochem.* **74**, 739–789 (2005).
15. Starling, S. β -cell dedifferentiation prior to insulinitis prevents T1DM. *Nat. Rev. Endocrinol.* **16**, 301 (2020).
16. Lee, H. et al. Beta cell dedifferentiation induced by IRE1 α deletion prevents type 1 diabetes. *Cell Metab.* **31**, 822–836 (2020).
17. Eizirik, D. L., Pasquali, L. & Cnop, M. Pancreatic beta-cells in type 1 and type 2 diabetes mellitus: different pathways to failure. *Nat. Rev. Endocrinol.* **16**, 349–362 (2020).
18. Xin, Y. et al. RNA sequencing of single human islet cells reveals type 2 diabetes genes. *Cell Metab.* **24**, 608–615 (2016).
19. Szabat, M. et al. Reduced insulin production relieves endoplasmic reticulum stress and induces β cell proliferation. *Cell Metab.* **23**, 179–193 (2016).
20. Wang, S., Flibotte, S., Camunas-Soler, J., MacDonald, P. E. & Johnson, J. D. A new hypothesis for type 1 diabetes risk: the at-risk allele at rs3842753 associates with increased beta cell INS mRNA in a meta-analysis of single cell RNA sequencing data. *Can. J. Diabetes* <https://doi.org/10.1016/j.cjcd.2021.03.007> (2021).
21. Han, J. & Kaufman, R. J. Physiological/pathological ramifications of transcription factors in the unfolded protein response. *Genes Dev.* **31**, 1417–1438 (2017).
22. Amin-Wetzel, N. et al. A J-protein co-chaperone recruits BiP to monomerize IRE1 and repress the unfolded protein response. *Cell* **171**, 1625–1637 e1613 (2017).
23. Yoshida, H., Matsui, T., Yamamoto, A., Okada, T. & Mori, K. XBP1 mRNA is induced by ATF6 and spliced by IRE1 in response to ER stress to produce a highly active transcription factor. *Cell* **107**, 881–891 (2001).
24. Casagrande, R. et al. Degradation of proteins from the ER of *S. cerevisiae* requires an intact unfolded protein response pathway. *Mol. Cell* **5**, 729–735 (2000).
25. Shen, X., Ellis, R. E., Sakaki, K. & Kaufman, R. J. Genetic interactions due to constitutive and inducible gene regulation mediated by the unfolded protein response in *C. elegans*. *PLoS Genet.* **1**, e37 (2005).
26. Hassler, J. R. et al. The IRE1 α /XBP1 pathway is essential for the glucose response and protection of beta cells. *PLoS Biol.* **13**, e1002277 (2015).
27. Probst, C. R., Brostrom, M. A., Malara, E. M. & Brostrom, C. O. Phosphorylation of eukaryotic initiation factor (eIF) 2 α and inhibition of eIF-2B in GH3 pituitary cells by perturbants of early protein processing that induce GRP78. *J. Biol. Chem.* **267**, 16751–16754 (1992).
28. Harding, H. P., Zhang, Y. & Ron, D. Protein translation and folding are coupled by an endoplasmic-reticulum-resident kinase. *Nature* **397**, 271–274 (1999).
29. Scheuner, D. et al. Translational control is required for the unfolded protein response and in vivo glucose homeostasis. *Mol. Cell* **7**, 1165–1176 (2001).
30. Yong, J., Grankvist, N., Han, J. & Kaufman, R. J. Eukaryotic translation initiation factor 2 α phosphorylation as a therapeutic target in diabetes. *Expert Rev. Endocrinol. Metab.* **9**, 345–356 (2014).
31. Harding, H. P. et al. Regulated translation initiation controls stress-induced gene expression in mammalian cells. *Mol. Cell* **6**, 1099–1108 (2000).
32. Han, J. et al. ER-stress-induced transcriptional regulation increases protein synthesis leading to cell death. *Nat. Cell Biol.* **15**, 481–490 (2013).
33. Haze, K., Yoshida, H., Yanagi, H., Yura, T. & Mori, K. Mammalian transcription factor ATF6 is synthesized as a transmembrane protein and activated by proteolysis in response to endoplasmic reticulum stress. *Mol. Biol. Cell* **10**, 3787–3799 (1999).
34. Harding, H. P. et al. Diabetes mellitus and exocrine pancreatic dysfunction in *perK*^{-/-} mice reveals a role for translational control in secretory cell survival. *Mol. Cell* **7**, 1153–1163 (2001).
35. Back, S. H. et al. Translation attenuation through eIF2 α phosphorylation prevents oxidative stress and maintains the differentiated state in beta cells. *Cell Metab.* **10**, 13–26 (2009).
36. Usui, M. et al. Atf6 α -null mice are glucose intolerant due to pancreatic beta-cell failure on a high-fat diet but partially resistant to diet-induced insulin resistance. *Metabolism* **61**, 1118–1128 (2012).
37. Gu, N. et al. Obesity has an interactive effect with genetic variation in the activating transcription factor 6 gene on the risk of pre-diabetes in individuals of Chinese Han descent. *PLoS ONE* **9**, e109805 (2014).
38. Thameem, F., Farook, V. S., Bogardus, C. & Prochazka, M. Association of amino acid variants in the activating transcription factor 6 gene (ATF6) on 1q21-q23 with type 2 diabetes in Pima Indians. *Diabetes* **55**, 839–842 (2006).
39. Lee, A. H., Heidtman, K., Hotamisligil, G. S. & Glimcher, L. H. Dual and opposing roles of the unfolded protein response regulated by IRE1 α and XBP1 in proinsulin processing and insulin secretion. *Proc. Natl Acad. Sci. USA* **108**, 8885–8890 (2011).
40. Ittner, A. A. et al. The nucleotide exchange factor SIL1 is required for glucose-stimulated insulin secretion from mouse pancreatic beta cells in vivo. *Diabetologia* **57**, 1410–1419 (2014).
41. Fritz, J. M. et al. Deficiency of the BiP cochaperone ERdj4 causes constitutive endoplasmic reticulum stress and metabolic defects. *Mol. Biol. Cell* **25**, 431–440 (2014).
42. Ladiges, W. C. et al. Pancreatic beta-cell failure and diabetes in mice with a deletion mutation of the endoplasmic reticulum molecular chaperone gene P58IPK. *Diabetes* **54**, 1074–1081 (2005).
43. Han, J. et al. Antioxidants complement the requirement for protein chaperone function to maintain beta-cell function and glucose homeostasis. *Diabetes* **64**, 2892–2904 (2015).
44. Synofzik, M. et al. Absence of BiP co-chaperone DNAJC3 causes diabetes mellitus and multisystemic neurodegeneration. *Am. J. Hum. Genet.* **95**, 689–697 (2014).
45. Teodoro-Morrison, T., Schuiki, I., Zhang, L., Belsham, D. D. & Volchuk, A. GRP78 overproduction in pancreatic beta cells protects against high-fat-diet-induced diabetes in mice. *Diabetologia* **56**, 1057–1067 (2013).
46. Kulawut, S. et al. DNAJC3 mutation in Thai familial type 2 diabetes mellitus. *Int. J. Mol. Med.* **42**, 1064–1073 (2018).
47. Lindahl, M. et al. MANF is indispensable for the proliferation and survival of pancreatic β cells. *Cell Rep.* **7**, 366–375 (2014).
48. Shrestha, N., Reinert, R. B. & Qi, L. Endoplasmic reticulum protein quality control in β cells. *Semin. Cell Dev. Biol.* **103**, 59–67 (2020).
49. Ledermann, H. M. Is maturity onset diabetes at young age (MODY) more common in Europe than previously assumed? *Lancet* **345**, 648 (1995).
50. Sato, Y. et al. Anks4b, a novel target of HNF4 α protein, interacts with GRP78 protein and regulates endoplasmic reticulum stress-induced apoptosis in pancreatic beta-cells. *J. Biol. Chem.* **287**, 25236–25245 (2012).
51. Matschinsky, F. et al. Glucokinase as pancreatic beta cell glucose sensor and diabetes gene. *J. Clin. Invest.* **92**, 2092–2098 (1993).
52. Velho, G. et al. Primary pancreatic beta-cell secretory defect caused by mutations in glucokinase gene in kindreds of maturity onset diabetes of the young. *Lancet* **340**, 444–448 (1992).
53. van Buerck, L. et al. Enhanced oxidative stress and endocrine pancreas alterations are linked to a novel glucokinase missense mutation in ENU-derived Munich Gck(D217V) mutants. *Mol. Cell Endocrinol.* **362**, 139–148 (2012).
54. Shirakawa, J. et al. Glucokinase activation ameliorates ER stress-induced apoptosis in pancreatic beta-cells. *Diabetes* **62**, 3448–3458 (2013).
55. Yamagata, K. et al. Mutations in the hepatocyte nuclear factor-1 α gene in maturity-onset diabetes of the young (MODY3). *Nature* **384**, 455–458 (1996).
56. Kirkpatrick, C. L. et al. Hepatic nuclear factor 1 α (HNF1 α) dysfunction down-regulates X-box-binding protein 1 (XBP1) and sensitizes beta-cells to endoplasmic reticulum stress. *J. Biol. Chem.* **286**, 32300–32312 (2011).
57. Hagenfeldt-Johansson, K. A. et al. Beta-cell-targeted expression of a dominant-negative hepatocyte nuclear factor-1 α induces a maturity-onset diabetes of the young (MODY)3-like phenotype in transgenic mice. *Endocrinology* **142**, 5311–5320 (2001).
58. Stoffers, D. A., Ferrer, J., Clarke, W. L. & Habener, J. F. Early-onset type-II diabetes mellitus (MODY4) linked to IPF1. *Nat. Genet.* **17**, 138–139 (1997).
59. Johnson, J. D. et al. Increased islet apoptosis in *Pdx1*^{-/-} mice. *J. Clin. Invest.* **111**, 1147–1160 (2003).
60. Juliana, C. A. et al. A PDX1-ATF transcriptional complex governs beta cell survival during stress. *Mol. Metab.* **17**, 39–48 (2018).
61. Sachdeva, M. M. et al. Pdx1 (MODY4) regulates pancreatic beta cell susceptibility to ER stress. *Proc. Natl Acad. Sci. USA* **106**, 19090–19095 (2009).
62. Johnson, J. S. et al. Pancreatic and duodenal homeobox protein 1 (Pdx-1) maintains endoplasmic reticulum calcium levels through transcriptional regulation of sarco-endoplasmic reticulum calcium ATPase 2b (SERCA2b) in the islet beta cell. *J. Biol. Chem.* **289**, 32798–32810 (2014).
63. Zhang, M. et al. Saturated fatty acids entrap PDX1 in stress granules and impede islet beta cell function. *Diabetologia* **64**, 1144–1157 (2021).
64. Johnson, J. D. et al. Insulin protects islets from apoptosis via Pdx1 and specific changes in the human islet proteome. *Proc. Natl Acad. Sci. USA* **103**, 19575–19580 (2006).
65. Collobat, P. et al. Opposing actions of Arx and Pax4 in endocrine pancreas development. *Genes Dev.* **17**, 2591–2603 (2003).
66. Smith, S. B., Ee, H. C., Connors, J. R. & German, M. S. Paired-homeodomain transcription factor PAX4 acts as a transcriptional repressor in early pancreatic development. *Mol. Cell Biol.* **19**, 8272–8280 (1999).
67. Hu, H. K. et al. In vivo conditional Pax4 overexpression in mature islet beta-cells prevents stress-induced hyperglycemia in mice. *Diabetes* **60**, 1705–1715 (2011).
68. Mellado-Gil, J. M. et al. PAX4 preserves endoplasmic reticulum integrity preventing beta cell degeneration in a mouse model of type 1 diabetes mellitus. *Diabetologia* **59**, 755–765 (2016).
69. Haataja, L. et al. Disulfide mispairing during proinsulin folding in the endoplasmic reticulum. *Diabetes* **65**, 1050–1060 (2016).
70. Liu, M. et al. Mutant INS-gene induced diabetes of youth: proinsulin cysteine residues impose dominant-negative inhibition on wild-type proinsulin transport. *PLoS One* **5**, e13333 (2010).
71. Rege, N. K. et al. Evolution of insulin at the edge of foldability and its medical implications. *Proc. Natl Acad. Sci. USA* **117**, 29618–29628 (2020).
72. Ma, S. et al. β cell replacement after gene editing of a neonatal diabetes-causing mutation at the insulin locus. *Stem Cell Rep.* **11**, 1407–1415 (2018).
73. Modi, H. & Johnson, J. D. Folding mutations suppress early beta-cell proliferation. *eLife* **7**, e43475 (2018).
74. Harding, H. P. et al. An integrated stress response regulates amino acid metabolism and resistance to oxidative stress. *Mol. Cell* **11**, 619–633 (2003).

75. De Franco, E. et al. De novo mutations in EIF2B1 affecting eIF2 signaling cause neonatal/early-onset diabetes and resultant hepatic dysfunction. *Diabetes* **69**, 477–483 (2020).
76. Inoue, H. et al. A gene encoding a transmembrane protein is mutated in patients with diabetes mellitus and optic atrophy (Wolfram syndrome). *Nat. Genet.* **20**, 143–148 (1998).
77. Chaussent, A. et al. Neurologic features and genotype-phenotype correlation in Wolfram syndrome. *Ann. Neurol.* **69**, 501–508 (2011).
78. Morikawa, S., Tajima, T., Nakamura, A., Ishizu, K. & Ariga, T. A novel heterozygous mutation of the WFS1 gene leading to constitutive endoplasmic reticulum stress is the cause of Wolfram syndrome. *Pediatr. Diabetes* **18**, 934–941 (2017).
79. Yurimoto, S. et al. Identification and characterization of wolframin, the product of the Wolfram syndrome gene (WFS1), as a novel calmodulin-binding protein. *Biochemistry* **48**, 3946–3955 (2009).
80. Takei, D. et al. WFS1 protein modulates the free Ca^{2+} concentration in the endoplasmic reticulum. *FEBS Lett.* **580**, 5635–5640 (2006).
81. Fonseca, S. G. et al. Wolfram syndrome 1 gene negatively regulates ER stress signaling in rodent and human cells. *J. Clin. Invest.* **120**, 744–755 (2010).
82. Lu, S. et al. A calcium-dependent protease as a potential therapeutic target for Wolfram syndrome. *Proc. Natl Acad. Sci. USA* **111**, E5292–E5301 (2014).
83. Abreu, D. et al. A phase 1b/2a clinical trial of dantrolene sodium in patients with Wolfram syndrome. *medRxiv* <https://doi.org/10.1101/2020.10.07.20208694> (2020).
84. Scheuner, D. et al. Control of mRNA translation preserves endoplasmic reticulum function in beta cells and maintains glucose homeostasis. *Nat. Med.* **11**, 757–764 (2005).
85. Arunagiri, A. et al. Proinsulin misfolding is an early event in the progression to type 2 diabetes. *eLife* **8**, e44532 (2019).
86. Harding, H. P. et al. Ppp1r15 gene knockout reveals an essential role for translation initiation factor 2 alpha (eIF2alpha) dephosphorylation in mammalian development. *Proc. Natl Acad. Sci. USA* **106**, 1832–1837 (2009).
87. Song, B., Scheuner, D., Ron, D., Pennathur, S. & Kaufman, R. J. Chop deletion reduces oxidative stress, improves β cell function, and promotes cell survival in multiple mouse models of diabetes. *J. Clin. Invest.* **118**, 3378–3389 (2008).
88. Sharma, R. B. et al. Insulin demand regulates beta cell number via the unfolded protein response. *J. Clin. Invest.* **125**, 3831–3846 (2015).
89. Donath, M. Y. et al. Islet inflammation in type 2 diabetes: from metabolic stress to therapy. *Metab. Stress Ther.* **31** (Suppl. 2), S161–S164 (2008).
90. Johnson, A. R., Justin Milner, J. & Makowski, L. The inflammation highway: metabolism accelerates inflammatory traffic in obesity. *Immunol. Rev.* **249**, 218–238 (2012).
91. Perry, R. J. et al. Hepatic acetyl CoA links adipose tissue inflammation to hepatic insulin resistance and type 2 diabetes. *Cell* **160**, 745–758 (2015).
92. Maedler, K. et al. Glucose-induced β cell production of IL-1 β contributes to glucotoxicity in human pancreatic islets. *J. Clin. Invest.* **110**, 851–860 (2002).
93. Boni-Schnetzler, M. et al. Increased interleukin (IL)-1beta messenger ribonucleic acid expression in beta-cells of individuals with type 2 diabetes and regulation of IL-1beta in human islets by glucose and autostimulation. *J. Clin. Endocrinol. Metab.* **93**, 4065–4074 (2008).
94. Ehses, J. A. et al. Increased number of islet-associated macrophages in type 2 diabetes. *Diabetes* **56**, 2356–2370 (2007).
95. Kahn, S. E., Andrikopoulos, S. & Verchere, C. B. Islet amyloid: a long-recognized but underappreciated pathological feature of type 2 diabetes. *Diabetes* **48**, 241–253 (1999).
96. Butler, A. E. et al. β -cell deficit and increased β -cell apoptosis in humans with type 2 diabetes. *Diabetes* **52**, 102–110 (2003).
97. O'Neill, C. M. et al. Circulating levels of IL-1B+IL-6 cause ER stress and dysfunction in islets from prediabetic male mice. *Endocrinology* **154**, 3077–3088 (2013).
98. Ehses, J. A., Boni-Schnetzler, M., Faulenbach, M. & Donath, M. Y. Macrophages, cytokines and beta-cell death in type 2 diabetes. *Biochem. Soc. Trans.* **36**, 340–342 (2008).
99. Westwell-Roper, C. Y., Ehses, J. A. & Verchere, C. B. Resident macrophages mediate islet amyloid polypeptide-induced islet IL-1beta production and beta-cell dysfunction. *Diabetes* **63**, 1698–1711 (2014).
100. Boni-Schnetzler, M., Ehses, J. A., Faulenbach, M. & Donath, M. Y. Insulinitis in type 2 diabetes. *Diabetes Obes. Metab.* **10**(Suppl. 4), 201–204 (2008).
101. Miani, M. et al. Endoplasmic reticulum stress sensitizes pancreatic beta cells to interleukin-1 β -induced apoptosis via Bim/A1 imbalance. *Cell Death Dis.* **4**, e701 (2013).
102. Hasnain, S. Z. et al. Glycemic control in diabetes is restored by therapeutic manipulation of cytokines that regulate beta cell stress. *Nat. Med.* **20**, 1417–1426 (2014).
103. Wang, X. et al. Interleukin-22 alleviates metabolic disorders and restores mucosal immunity in diabetes. *Nature* **514**, 237–241 (2014).
104. Lerner, A. G. et al. IRE1 α induces thioredoxin-interacting protein to activate the NLRP3 inflammasome and promote programmed cell death under irremediable ER stress. *Cell Metab.* **16**, 250–264 (2012).
105. Oslowski, C. M. et al. Thioredoxin-interacting protein mediates ER stress-induced β cell death through initiation of the inflammasome. *Cell Metab.* **16**, 265–273 (2012).
106. Wang, J., Song, M.-Y., Lee, J. Y., Kwon, K. S. & Park, B.-H. The NLRP3 inflammasome is dispensable for ER stress-induced pancreatic β -cell damage in Akita mice. *Biochem. Biophys. Res. Commun.* **466**, 300–305 (2015).
107. Jang, I. et al. PDIA1/P4HB is required for efficient proinsulin maturation and β cell health in response to diet induced obesity. *eLife* **8**, e44528 (2019).
108. Liu, M. et al. Normal and defective pathways in biogenesis and maintenance of the insulin storage pool. *J. Clin. Invest.* **131**, e142240 (2021).
109. Farack, L. et al. Transcriptional heterogeneity of beta cells in the intact pancreas. *Dev. Cell* **48**, 115–125.e4 (2019).
110. Fang, Z. et al. Single-cell heterogeneity analysis and crisp screen identify key β -cell-specific disease genes. *Cell Rep.* **26**, 3132–3144.e7 (2019).
111. Camunas-Soler, J. et al. Patch-seq links single-cell transcriptomes to human islet dysfunction in diabetes. *Cell Metab.* **31**, 1017–1031.e4 (2020).
112. Robertson, R. P. Chronic oxidative stress as a central mechanism for glucose toxicity in pancreatic islet beta cells in diabetes. *J. Biol. Chem.* **279**, 42351–42354 (2004).
113. Kaneto, H., Kawamori, D., Matsuoka, T. A., Kajimoto, Y. & Yamasaki, Y. Oxidative stress and pancreatic beta-cell dysfunction. *Am. J. Ther.* **12**, 529–535 (2005).
114. Kaneto, H. et al. Role of oxidative stress, endoplasmic reticulum stress, and c-Jun N-terminal kinase in pancreatic beta-cell dysfunction and insulin resistance. *Int. J. Biochem. Cell Biol.* **37**, 1595–1608 (2005).
115. Ravier, M. A. et al. Mechanisms of control of the free Ca^{2+} concentration in the endoplasmic reticulum of mouse pancreatic beta-cells: interplay with cell metabolism and $[\text{Ca}^{2+}]_i$ and role of SERCA2b and SERCA3. *Diabetes* **60**, 2533–2545 (2011).
116. Tong, X. et al. SERCA2 deficiency impairs pancreatic β -cell function in response to diet-induced obesity. *Diabetes* **65**, 3039–3052 (2016).
117. Michalak, M., Corbett, E. F., Mesaeli, N., Nakamura, K. & Opas, M. Calreticulin: one protein, one gene, many functions. *Biochem. J.* **344**, 281–292 (1999).
118. Suzuki, C. K., Bonifacio, J. S., Lin, A. Y., Davis, M. M. & Klausner, R. D. Regulating the retention of T-cell receptor alpha chain variants within the endoplasmic reticulum: Ca^{2+} -dependent association with BiP. *J. Cell Biol.* **114**, 189–205 (1991).
119. Gelebart, P., Opas, M. & Michalak, M. Calreticulin, a Ca^{2+} -binding chaperone of the endoplasmic reticulum. *Int. J. Biochem. Cell Biol.* **37**, 260–266 (2005).
120. Guest, P. C., Baileys, E. M. & Hutton, J. C. Endoplasmic reticulum Ca^{2+} is important for the proteolytic processing and intracellular transport of proinsulin in the pancreatic beta-cell. *Biochem. J.* **323**, 445–450 (1997).
121. Ling, Z. & Pipeleers, D. G. Prolonged exposure of human beta cells to elevated glucose levels results in sustained cellular activation leading to a loss of glucose regulation. *J. Clin. Invest.* **98**, 2805–2812 (1996).
122. Ling, Z. et al. Effects of chronically elevated glucose levels on the functional properties of rat pancreatic beta-cells. *Diabetes* **45**, 1774–1782 (1996).
123. Schuit, F. C., In't Veld, P. A. & Pipeleers, D. G. Glucose stimulates proinsulin biosynthesis by a dose-dependent recruitment of pancreatic beta cells. *Proc. Natl Acad. Sci. USA* **85**, 3865–3869 (1988).
124. Yong, J. et al. Mitochondria supply ATP to the ER through a mechanism antagonized by cytosolic Ca^{2+} . *eLife* **8**, e49682 (2019).
125. Zhang, I. X., Ren, J., Vadrevu, S., Raghavan, M. & Satin, L. S. ER stress increases store-operated Ca^{2+} entry (SOCE) and augments basal insulin secretion in pancreatic β cells. *J. Biol. Chem.* **295**, 5685–5700 (2020).
126. Templeman, N. M., Skovso, S., Page, M. M., Lim, G. E. & Johnson, J. D. A causal role for hyperinsulinemia in obesity. *J. Endocrinol.* **232**, R173–R183 (2017).
127. Thorpe, S. R. & Baynes, J. W. Maillard reaction products in tissue proteins: new products and new perspectives. *Amino Acids* **25**, 275–281 (2003).
128. Kooptiwut, S. et al. High glucose-induced impairment in insulin secretion is associated with reduction in islet glucokinase in a mouse model of susceptibility to islet dysfunction. *J. Mol. Endocrinol.* **35**, 39–48 (2005).
129. Pascal, S. M. A., Veiga-da-Cunha, M., Gilon, P., Schaftingen, E. V. & Jonas, J. C. Effects of fructosamine-3-kinase deficiency on function and survival of mouse pancreatic islets after prolonged culture in high glucose or ribose concentrations. *Am. J. Physiol. Endocrinol. Metab.* **298**, E586–E596 (2010).
130. Piperi, C., Adamopoulos, C., Dalagiorgou, G., Diamanti-Kandaraki, E. & Papavasiliou, A. G. Crosstalk between advanced glycation and endoplasmic reticulum stress: emerging therapeutic targeting for metabolic diseases. *J. Clin. Endocrinol. Metab.* **97**, 2231–2242 (2012).
131. Peri, S. et al. Significant human beta-cell turnover is limited to the first three decades of life as determined by in vivo thymidine analog incorporation and radiocarbon dating. *J. Clin. Endocrinol. Metab.* **95**, E234–E239 (2010).
132. Cohrs, C. M. et al. Dysfunction of persisting beta cells is a key feature of early type 2 diabetes pathogenesis. *Cell Rep.* **31**, 107469 (2020).
133. Mehran, A. E. et al. Hyperinsulinemia drives diet-induced obesity independently of brain insulin production. *Cell Metab.* **16**, 723–737 (2012).
134. Templeman, N. M., Cleve, S. M. & Johnson, J. D. Suppression of hyperinsulinemia in growing female mice provides long-term protection against obesity. *Diabetologia* **58**, 2392–2402 (2015).
135. Zhang, A. M. Y. et al. Endogenous hyperinsulinemia contributes to pancreatic cancer development. *Cell Metab.* **30**, 403–404 (2019).
136. Page, M. M. et al. Reducing insulin via conditional partial gene ablation in adults reverses diet-induced weight gain. *FASEB J.* **32**, 1196–1206 (2018).
137. Wiebe, N. et al. Temporal associations among body mass index, fasting insulin, and systemic inflammation: a systematic review and meta-analysis. *JAMA Netw. Open* **4**, e211263 (2021).
138. Yong, J. et al. Chop/Ddit3 depletion in β -cells alleviates ER stress and corrects hepatic steatosis. *bioRxiv* <https://doi.org/10.1101/2020.01.02.893271> (2020).
139. Ammala, C. et al. Targeted delivery of antisense oligonucleotides to pancreatic beta-cells. *Sci. Adv.* **4**, eaat3386 (2018).
140. Investigators, O. T. et al. Basal insulin and cardiovascular and other outcomes in dysglycemia. *N. Engl. J. Med.* **367**, 319–328 (2012).
141. Smith, G. I. et al. Insulin resistance drives hepatic de novo lipogenesis in nonalcoholic fatty liver disease. *J. Clin. Invest.* **130**, 1453–1460 (2020).
142. Smith, G. I. et al. Influence of adiposity, insulin resistance and intrahepatic triglyceride content on insulin kinetics. *J. Clin. Invest.* **130**, 3305–3314 (2020).
143. Roumans, K. H. M. et al. Hepatic saturated fatty acid fraction is associated with de novo lipogenesis and hepatic insulin resistance. *Nat. Commun.* **11**, 1891 (2020).
144. Vatner, D. F. et al. Insulin-independent regulation of hepatic triglyceride synthesis by fatty acids. *Proc. Natl Acad. Sci. USA* **112**, 1143–1148 (2015).
145. Wang, T. et al. Association of insulin resistance and β -cell dysfunction with incident diabetes among adults in China: a nationwide, population-based, prospective cohort study. *Lancet Diabetes Endocrinol.* **8**, 115–124 (2020).
146. Wang, G. et al. Muscle-specific insulin receptor overexpression protects mice from diet-induced glucose intolerance but leads to postreceptor insulin resistance. *Diabetes* **69**, 2294–2309 (2020).
147. Treadway, J. L., Whittaker, J. & Pessin, J. E. Regulation of the insulin receptor kinase by hyperinsulinism. *J. Biol. Chem.* **264**, 15136–15143 (1989).

148. Marshall, S. & Olefsky, J. M. Effects of insulin incubation on insulin binding, glucose transport, and insulin degradation by isolated rat adipocytes. Evidence for hormone-induced desensitization at the receptor and postreceptor level. *J. Clin. Invest.* **66**, 763–772 (1980).
149. Cnop, M., Toivonen, S., Igoillo-Esteve, M. & Salpea, P. Endoplasmic reticulum stress and eIF2 α phosphorylation: the Achilles heel of pancreatic beta cells. *Mol. Metab.* **6**, 1024–1039 (2017).
150. Yamane, S. et al. GLP-1 receptor agonist attenuates endoplasmic reticulum stress-mediated beta-cell damage in Akita mice. *J. Diabetes Investig.* **2**, 104–110 (2011).
151. Yusta, B. et al. GLP-1 receptor activation improves beta cell function and survival following induction of endoplasmic reticulum stress. *Cell Metab.* **4**, 391–406 (2006).
152. Wek, R. C. & Anthony, T. G. ExtENDING beta cell survival by UPRegulating ATF4 translation. *Cell Metab.* **4**, 333–334 (2006).
153. Evans-Molina, C. et al. Peroxisome proliferator-activated receptor γ activation restores islet function in diabetic mice through reduction of endoplasmic reticulum stress and maintenance of euchromatin structure. *Mol. Cell Biol.* **29**, 2053–2067 (2009).
154. Luciani, D. S. et al. Roles of IP3R and RyR Ca²⁺ channels in endoplasmic reticulum stress and beta-cell death. *Diabetes* **58**, 422–432 (2009).
155. Klein, M. C. et al. AXER is an ATP/ADP exchanger in the membrane of the endoplasmic reticulum. *Nat. Commun.* **9**, 3489 (2018).

Acknowledgements

The authors acknowledge the support of NIH grants CA198103, DK113171, DK110973, DK103185 (R.J.K.) and DK48280 (P.A.), and the National Research Foundation of Korea NRF-2017M3A9G7072745, NRF-2019R1A5A8083404, NRF-2017M3A9C6033069, NRF-2019R1A2C1085284 (J.H.), and of the Diabetes Investigator Award from Diabetes Canada (J.D.J.).

Author contributions

R.J.K., J.Y., J.D.J. and J.H. researched data for the article. All authors contributed substantially to the discussion of the content. All authors wrote the article. R.J.K., J.Y., J.H., P.A. and J.D.J. reviewed and/or edited the manuscript before submission.

Competing interests

The authors declare no competing interests.

Peer review information

Nature Reviews Endocrinology thanks H. Lickert and the other, anonymous, reviewer(s) for their contribution to the peer review of this work.

Publisher's note

Springer Nature remains neutral with regard to jurisdictional claims in published maps and institutional affiliations.

© Springer Nature Limited 2021